

A photograph showing a person's hand holding a small, dark, segmented insect (likely a beetle) over a dark, irregular spill on a light-colored, textured surface (possibly a rock or concrete). The text 'Spill Management Considerations' is overlaid in large white font.

# Spill Management Considerations

# The Regulated Community





# Properties & Environmental Fates

- **Heavy Fuel Oils (Bunker)**  
Commercial fuels

**Persistent, heavy, easy to contain, difficult to recover and clean**

- **Diesel**  
Commercial and pleasure craft fuels

**Persistent, lighter, easy to contain, relatively easy to recover and clean**

- **Gasoline**  
Pleasure craft fuel

**Non-Persistent, highly flammable, light, dangerous to contain, “heavy” ends are like diesel**

# The Sheen

- Persistent
- Difficult to remove
- Keeps coming back
- Wants more money every time you see it
- Electrostatic charge
- Use of polymer “dusts”



# Typical Sources - Commercial

- Contaminated bilges
- Bunker transfers
- Tank overflows
- Tank failure
- Contaminated ballast



# Sources – Pleasure Craft & Marinas

**Un-controlled bilges**

**Oil changes**

**Fuel overflows**

**Boat damage**

**Leaking underground/above ground tanks**

**Parking lot vehicular releases**

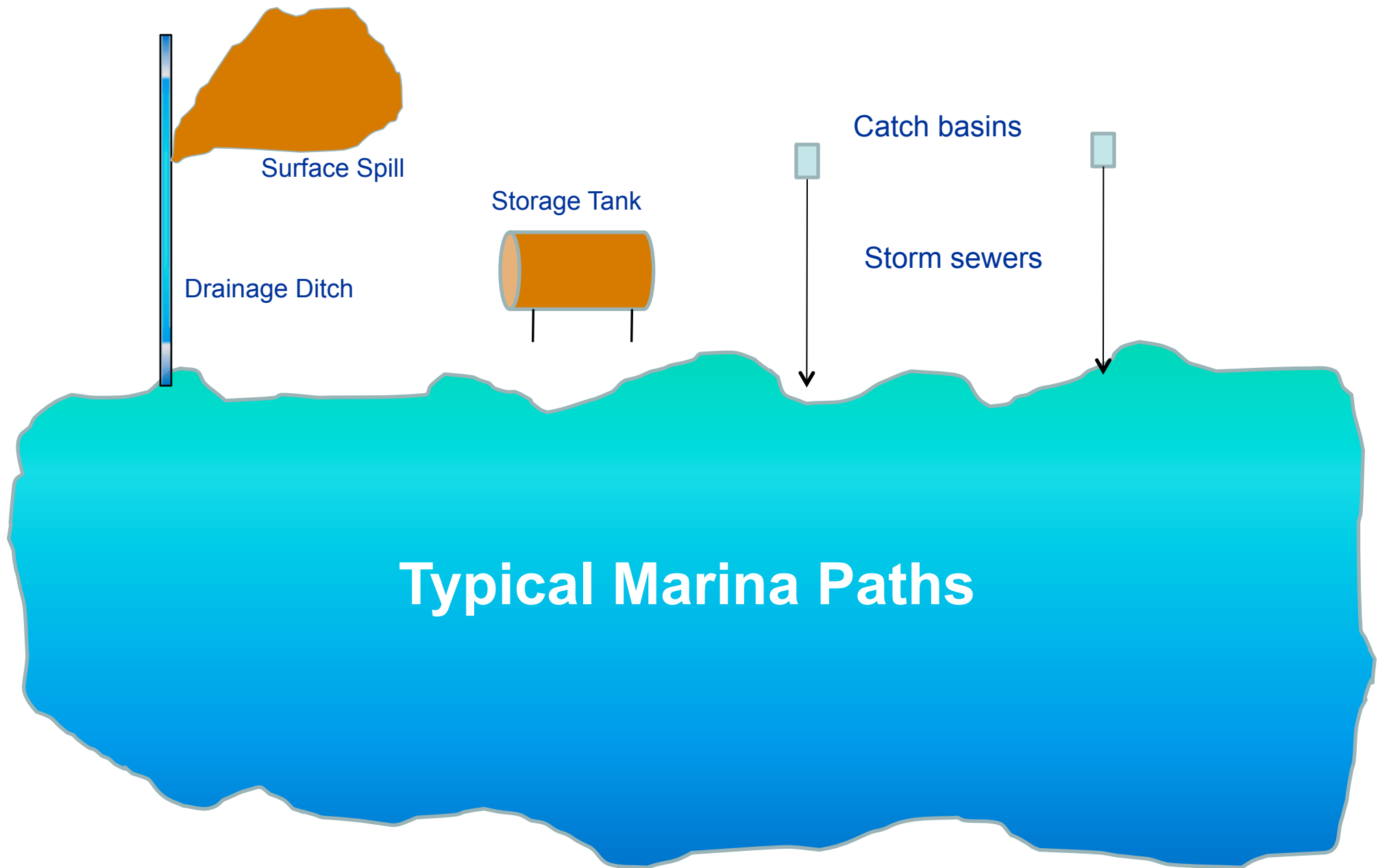
**Off-site migration of contaminants**

**Storm sewers**

**Fires**

**Deliberate dumping/vandalism (rare)**

**Unidentifiable / drifting releases**





# Impacts & Costs

- Marina surroundings/property impacts
- Gel coats
- Adjacent third party property
- Marina operations
- Punitive regulatory
- Public concerns



# Common Equipment



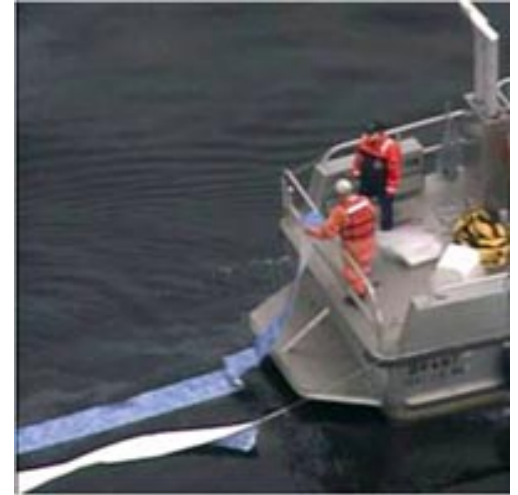
# Preparedness Equipment



Oleophilic Pads



Oleophilic Sorbent Booms



Sweeps

# At The Marina Level





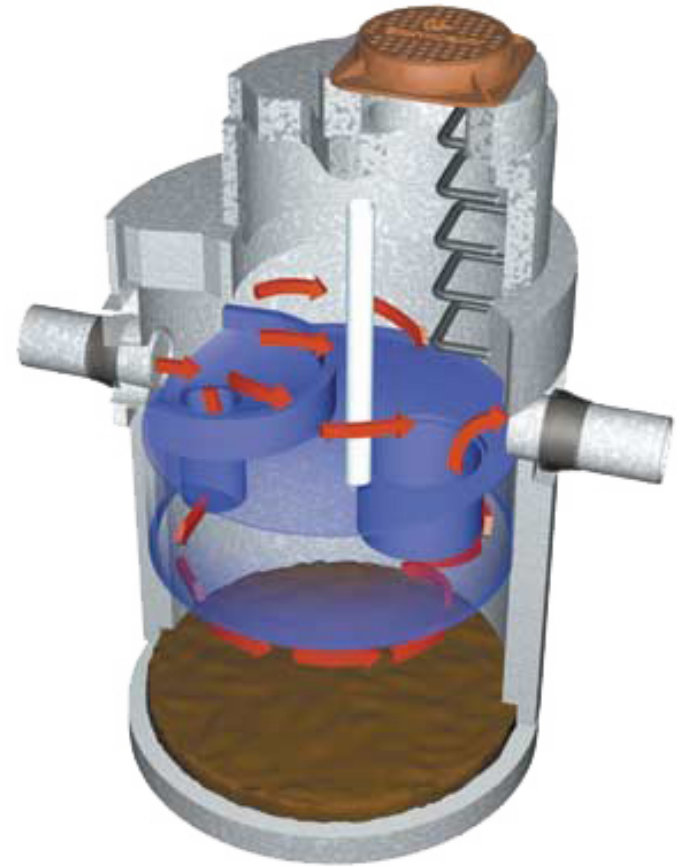
# The Ultimate Cleanup Weapon



# On The Hard!



Drain Mats



Interceptors

# Contingency Planning

A well proven concept  
Missing in many marinas

- Contacts & contracts
- Alerting procedures
- Equipment inventory
- Human resources
- Training
- Temporary Storage
- Pre-designated recovery spots
- Waste management



# Clean-Up Resources®

- < 10 litres, boat owner
- < 100 litres, Marina
- > 100 litres
- “Contractors”
  - Three national
  - Many local groups
- Networks
  - Local Mutual Aid
  - CERCA
  - ECRC and siblings
  - OMOA initiatives

# The Regulators

- Coast Guard
- Police
- Fisheries and Oceans
- Port Authorities
- Ministries of Environment
- Natural Resource Ministries



# Summary

- Focus is on,  
**audited**
  - Preparedness
  - Prevention
- Resources are scattered
- Regulators regulate



*"Never delegate authority; delegate liability."*



# Thank - You

Captain John Hosty *CHMM Master Mariner*

[jhosty@esrs.info](mailto:jhosty@esrs.info)

1 (905) 320 3861